

# Deliver sustainability

— AMSTELFARMA —



together for global health



## Content

Declaration of Sustainability	3
Sustainability Policy	4
Environment	6
Social	8
Governance	9
United Nations Global Compact	9
Sustainable Development Goals	10



All rights concerning the content of this brochure are reserved. No part of content may be copied, stored in a computerised database or made public, in any form or in any way, either electronically, mechanically, by Xerox, recording or any other means, without previous written permission of MEG. © MEG 2024

# Declaration of Sustainability



At The Medical Export Group and Amstelfarma, we feel that our responsibilities extend beyond creating a commercially and financially successful business. We strive to balance the needs of our stakeholders with our duty to protect the planet and enhance societal well-being for every human being now, and in future generations. This means integrating sustainability considerations into the decisions we make, from procurement and distribution to packaging and waste management.

In the last decade, The Medical Export Group has been dedicated to build and increase its local and regional sourcing and procurement activities in Africa. Working together with local manufacturers in numerous countries to improve quality, we hope to contribute to building local industry and economy as well as self-reliance.

The sustainability policy in this document reflects our commitment to contributing to a world where nobody has to suffer or die, due to limited access to medical care. We believe healthcare is a fundamental right for everyone, everywhere in the world. It is an essential condition for a prosperous future. By balancing sustainability with economic resilience, we aim to create a more sustainable future for us all.

*Josine Hoekstra-Voogd*

Josine Hoekstra-Voogd Chief  
Executive Officer  
The Medical Export Group B.V.

# Sustainability Policy

It is our mission to be a dedicated partner for organizations and local agencies who provide emergency and long-term medical solutions to low and middle-income countries. In order to deliver the right medical products and solutions to the right places, we are part of complex global healthcare supply chains. We are well aware that these complex supply chains have a sustainability impact that is not to be neglected. We have therefore created a sustainability policy that is focused on the three overarching 'ESG' categories of sustainability: Environment, Social and Governance. ESG offers a framework for evaluating MEG's impact on the environment, society, and its internal governance practices, used to assess sustainability and ethical impact. We do not only focus on the environmental aspect, because we believe that ecological responsibility, social well-being and sound governance are coherent elements of a sustainable business. In line with this, we are committed to UN's global compact and SDGs (Sustainable Development Goals) 3, 8, 12 and 13.

The scope of this sustainability policy includes purchasing, sales and distribution of pharmaceutical products, medical devices and in-vitro diagnostic and it is illustrated on the right. The goal of this policy is to continuously improve the sustainability impact of our operation. .







MEG warehouse in Vuren.

# Environment

We are committed to reduce the environmental impact of our operations, amongst others by means of local sourcing, sustainable procurement and monitoring and reducing our carbon footprint. By initiating and practicing eco-friendly practices, we aim to preserve the environment for future generations.

## Local sourcing

Local sourcing has great potential to significantly reduce the environmental impact by avoiding carbon emissions that are produced during the transportation of the medical supplies. Additionally, local sourcing supports local economies by creating jobs and fostering

community growth. This approach not only aligns with environmental sustainability goals, but also enhances supply chain resilience by reducing dependency on distant suppliers. It must be noted, that careful consideration needs to be given to the sustainability of the production processes of the supplier, as locally produced pharmaceuticals or medical devices/ equipment are not more sustainable by definition. We therefore strive to take this into consideration as well and help or guide our supplier where possible.

## Green procurement

We work on sustainable purchasing by requiring our key suppliers to commit to our ESG policy. By doing this, we ensure that our suppliers share and act on MEG's values and sustainability goals. MEG expects its suppliers to implement an environmental policy that includes specific and measurable commitments to reduce environmental impact, for example in the areas of energy consumption, waste reduction and emissions. Continuous improvement of environmental performance is an increasingly important aspect of the partnership with its suppliers.

## Reduction of carbon footprint (Scope 1, 2 and 3)

We carefully measure and monitor CO<sub>2</sub> emissions within MEG's operational limits. We report

internally and externally on these scope 1 and 2 emissions as defined in the GHG (Green House Gas) Protocol. With electric charging stations, we enable the electrification of MEG's vehicle fleet and we furthermore facilitate our employees to charge their electrical cars. There is also a reduction plan in place that can help MEG to reduce its CO<sub>2</sub> footprint. In addition to reducing our own CO<sub>2</sub> footprint, we also help others to reduce their environmental impact via our 3406 solar panels that are installed on top of our premises. The 3,406 solar panels continue to provide approximately 932,440 kWh of energy annually. This means around 340 households worth of energy is given back to the power grid.

Apart from MEG's scope 1 and 2 emissions, we aim to establish a baseline for the emissions generated by our logistics operation (Scope 3 emissions) through innovative software that helps us with 'carbon accounting'. This carbon

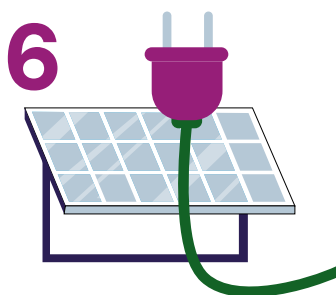
**10%**

Reduction of printed paper at MEG compared to 2023.



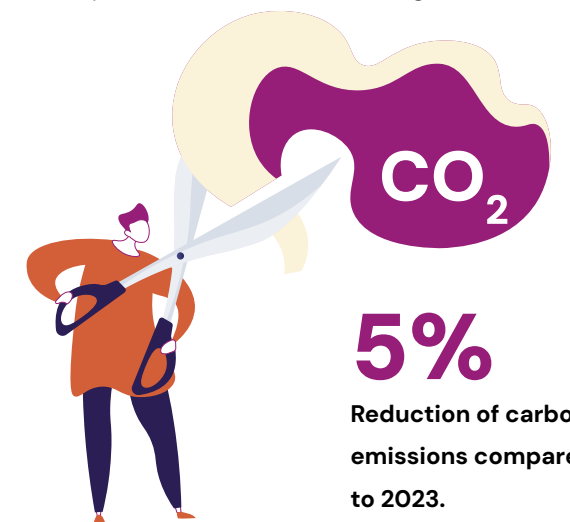
**3406**

Solar panels.



**5%**

Reduction of carbon emissions compared to 2023.



accounting tool complies with the latest regulatory frameworks (EN16258, GLEC, ISO14083). After the baseline measurement has been carried out, we actively work on reducing the CO<sub>2</sub> intensity of our logistics operation, for example through consolidation, modality shift and the use of sustainable fuels.

environmental aspects, ensure compliance with laws and regulations, and work towards sustainability goals. In line with ISO14001, we have defined environmental objectives that strive to improve MEG's environmental impact.

### ISO14001

We are working towards creating an Environmental Management System (EMS) conform ISO14001 standards. This EMS is designed to minimize their negative impact on the environment, comply with applicable laws, regulations, and other environmentally oriented requirements, and continually improve in the above. It is a systematic approach to managing



## Social

We recognize the importance of supporting the communities in which we operate. This means fostering a diverse and inclusive workforce, and upholding ethical labor practices throughout our supply chain. By prioritizing the well-being of people, we strive to create lasting positive change in society. We ensure social responsibility throughout the supply-chain via our ethical code of conduct which is signed by MEG staff and by its suppliers. This ethical code of conduct is based multiple principles listed on the right side. One principle is a fair living wage. We ensure a fair and market conform living wage by regularly benchmarking

our salaries with an external and independent party. In addition to the code of conduct, we have a group of positive energizers that aim (and do so successfully) to keep the spirit high among all MEG employees by regularly organizing sporting events, drinks and other social gatherings.

- Zero tolerance for discrimination, intimidation and harassment
- Safe and hygienic working conditions
- Abolition of child labor
- Paying a fair and market conform living wage
- Positive Energizers

## Governance

Effective and sound governance in itself are an essential element of a sustainable business. It furthermore ensures that the sustainability policy and sustainability objectives are integrated into its operation. We do so in the following ways:

- Business integrity with freedom of employment and association
- All employees sign an anti-corruption declaration
- We have a whistleblower scheme embedded in our code of conduct
- Involving stakeholders in the chosen sustainability course

- Our suppliers sign a governmental policy that is aligned with MEG's standards and principles



## United Nations Global Compact



MEG is committed to the United Nations Global Compact, underscoring our dedication to sustainability and ethical business practices at a global scale. By aligning our operations and strategies with the ten universal-ly accepted principles in the areas of human rights, labor, environment, and anti-corruption, we demonstrate our pledge to responsible business action. Through active participation in the Global Compact, MEG not only adheres to its high standards but also engages in collaborative projects that advance broader UN goals, including the Sustainable Development Goals that will be outlined below.



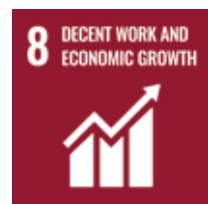
# Sustainable Development Goals

MEG has strategically chosen its SDGs by aligning its core business operations with global sustainability priorities as defined by the United Nations. The selection process involved an assessment of the company's impact on environmental, social, and economic factors, identifying areas where MEG can make the most significant contributions. This targeted approach ensures that MEG's efforts are not only relevant but also effective in promoting sustainable development within its sphere of influence.



## Sustainable Development Goal 3: Good Health and Wellbeing

MEG is not just supplying pharmaceuticals and other healthcare products. We offer specific products to combat the epidemics of AIDS, tuberculosis and malaria and other communicable diseases. Directly related to the target of reducing the neonatal mortality rate, MEG led the Neonatal Intensive Care Unit (NICU) project in Ethiopia. Together with regular cooperation partners, UNICEF and the Ministry of Public Health in Ethiopia, the MEG is committed to reducing the infant mortality rate. How? By providing eighty hospitals in Ethiopia with medical devices and knowledge for the care of sick babies.



## Sustainable Development Goal 8: Decent Work and Economic Growth

This objective fits seamlessly with the ethical code of conduct that is signed by both MEG staff and its suppliers. By guaranteeing good working conditions and good governance, we contribute to fair work and economic growth.



## Sustainable Development Goal 12: Responsible Consumption and Production

The goal of increasing global resource efficiency is directly linked to our commitment to SDG 12. We aim to continuously reduce the material footprint. MEG recognizes that the packaging of relief supplies is an essential aspect of humanitarian aid delivery. However, in the most fragile and tense contexts, this often becomes an unintended waste stream. We therefore encourage our suppliers to reduce their material footprint by making efficient use of their packaging materials and by using sustainable packaging materials.



## Sustainable Development Goal 13: Climate Action

MEG believes in a shared responsibility for climate action, as the effects of climate change have a global impact. We strive at reducing our greenhouse gas emissions, within and outside our operational boundaries. Within our operation boundaries, we strive for a reduction of scope 1 and 2 emissions, whereas scope 3 emissions involve value chain emissions. One way of reducing these emissions is by creating transparency in the carbon footprint of our logistical operation which can then be used as a starting point for offering sustainable solutions.



**The Medical Export Group B.V.**

Hooglandseweg 6 t: +31 183 356 100  
4214 KG Vuren info@meg.nl  
The Netherlands www.meg.nl

— AMSTELFARMA —